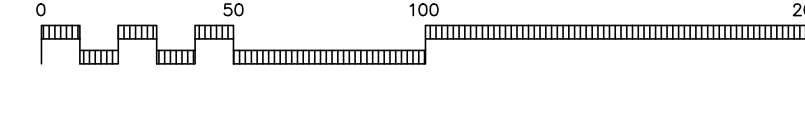


BLOCK 63
LOT 118
LAND N/F ML7 WINDSOR LLC,
C/O JEFFREY SIEGEL

GRAPHIC SCALE 1" = 50'



Item	Qty	Arrangement	Fixture Type	Description	Manufacturer	Catalog Number	CEC	L.F.	Year Make	Delivered Lumens	Mounting Height	Fix Base	Fixture
1	27	Single	SLP1	TYPE POLE MOUNTED AREA LIGHT	AM LIGHTING	AM-ALTP90-120-40-VOLT5-COLOR-A&F-800	000K	0.000	443	1871	25	PRO-90-80-40	ALTP90-120-40-500
2	18	Single	SLP2	TYPE POLE MOUNTED AREA LIGHT	AM LIGHTING	AM-ALTP90-120-40-VOLT5-COLOR-A&F-800	000K	0.000	443	1871	25	PRO-90-80-40	ALTP90-120-40-500
3	3	Single	SLP-F1	TYPE 3 SMALL MOUNTED AREA LIGHT	AM LIGHTING	AM-ALTP90-120-40-VOLT5-COLOR-A&F-800	000K	0.000	443	1871	25	PRO-90-80-40	ALTP90-120-40-500
4	21	Single	SLP-F1	TYPE 3 SMALL MOUNTED AREA LIGHT	AM LIGHTING	AM-ALTP90-120-40-VOLT5-COLOR-A&F-800	000K	0.000	443	1871	25	PRO-90-80-40	ALTP90-120-40-500
5	18	Single	SLP-F2	TYPE 3 SMALL MOUNTED AREA LIGHT	AM LIGHTING	AM-ALTP90-120-40-VOLT5-COLOR-A&F-800	000K	0.000	443	1871	25	PRO-90-80-40	ALTP90-120-40-500
6	1	Single	SLP-F1	TYPE 3 SMALL MOUNTED AREA LIGHT	AM LIGHTING	AM-ALTP90-120-40-VOLT5-COLOR-A&F-800	000K	0.000	443	1871	25	PRO-90-80-40	ALTP90-120-40-500
7	1	Single	SLP-F2	TYPE 3 SMALL MOUNTED AREA LIGHT	AM LIGHTING	AM-ALTP90-120-40-VOLT5-COLOR-A&F-800	000K	0.000	443	1871	25	PRO-90-80-40	ALTP90-120-40-500

Category	Item	Qty	Unit	Price	Total
TOTAL SITE	Site	1	EA	0.00	0.00
	Site	1	EA	0.00	0.00
TOTAL PARKING	Parking	1	EA	0.00	0.00
	Parking	1	EA	0.00	0.00
TOTAL TOTALS	Total	1	EA	0.00	0.00
	Total	1	EA	0.00	0.00

No.	REVISION	DATE
3	REVISED FOR PLANNING BOARD MEETING.	02-22-22
2	REVISED AS PER EAST WINDSOR TOWNSHIP LETTER DATED 07-27-18.	08-03-18
1	FOR FILING.	03-05-18
No.	REVISION	DATE

CLIENT:
AUROBINDO
AUROBINDO PHARMA USA INC.
279 PRINCETON-HIGHTSTOWN ROAD
EAST WINDSOR, NJ 08820

MEH CONSULTING ENGINEERS, INC.
www.mehengr.com
CIVIL ENGINEERS - STRUCTURAL ENGINEERS
ENVIRONMENTAL AND HYDRAULIC ENGINEERS
825 BLOOMFIELD AVENUE SUITE 106
VERONA, NEW JERSEY 07044
PHONE: (973) 239-2625 FAX: (973) 239-6356

MOHAMMED EL-HAWWAT, P.E.
NEW JERSEY PROFESSIONAL ENGINEER LICENSE NO. 38475

LIGHTING PLAN
PROPOSED ±170,100 S.F.
OFFICE/WAREHOUSE BUILDING
FOR
AUROBINDO PHARMA USA, INC.
TOWNSHIP OF EAST WINDSOR, LOT 2, BLOCK 4
MERCER COUNTY, NEW JERSEY

DATE: 02-22-22
SCALE: AS SHOWN
DRAWN BY: BHS
CHECKED BY: MEH
DATE: 03-05-18
W.O.: 18-012
CAD FILE: Y-12N13
Y-13