



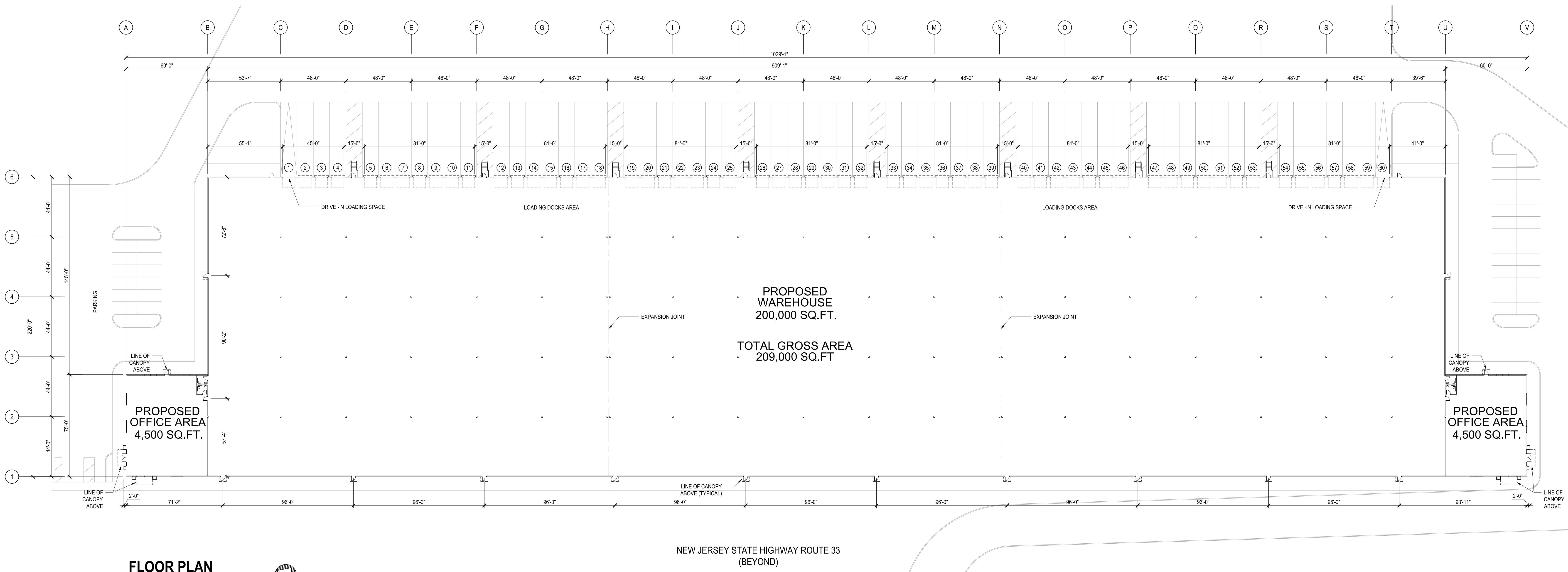
Jarmel Kizel

ARCHITECTS AND ENGINEERS INC.
42 OKNER PARKWAY
LIVINGSTON, NEW JERSEY 07039
TEL: 973-994-9669
FAX: 973-994-4069

www.jarmelkizel.com

Architecture
Engineering
Interior Design
Implementation Services

NJ State Board Of Architects Authorization No. 161
NJ State Board Of Engineers & Land Surveyors Authorization No. GA-278177



FLOOR PLAN

SCALE: 1/32"=1'-0"



NEW JERSEY STATE HIGHWAY ROUTE 33
(BEYOND)

ISSUE

NO.	DATE	DESCRIPTION	INT.
1	11-01-21	ZONING BOARD SUBMISSION	IHK

REVISION

NO.	DATE	DESCRIPTION	INT.
-----	------	-------------	------

PRINCIPALS

MATTHEW B. JARMEL, AIA, MBA
RICHARD A. JARMEL, PE
IRWIN H. KIZEL, AIA, PP

ARCHITECTS & ENGINEERS

JASMINE ALCADE, AIA
RONALD A. BRONKHORST, PE
JEROME LEBEN, F.A.S., P.E., P.P.
GERARD P. GEBARDO, PE
FREDERICK KINCAID, AIA
DAVID J. LESCHKE, PA
KAROLINA PODKONCZAK, AIA
ROBERT B. ROBINSON, AIA
CHERYL SCHWEIKER, AIA

Project:
PROPOSED WAREHOUSE FOR
624 EAST WINDSOR HI-TECH ASSOCIATES, LLC
624 MERCER STREET (NJSH ROUTE 33)
TOWNSHIP OF EAST WINDSOR
MERCER COUNTY, NEW JERSEY

Project Number: MERCERST20-179
Scale: AS NOTED
Drawn By: AA
Approved By: IHK

Drawing Name: FLOOR PLAN

Drawing Number: A-1

Initial Date: 09-02-20

ARCHITECT OF RECORD

IRWIN H. KIZEL, AIA, PP
NJ Lic. 216827992

H:\DRAWINGS\BAPP\PORT PROPERTIES\BAPP\PORTZ01.179 - 624 MERCER STREET WAREHOUSE\MERCERST20-179 SA-1 SCHEMATIC DESIGN.DWG AAMAWA PLOTTED: 11/17/2021 4:04 PM

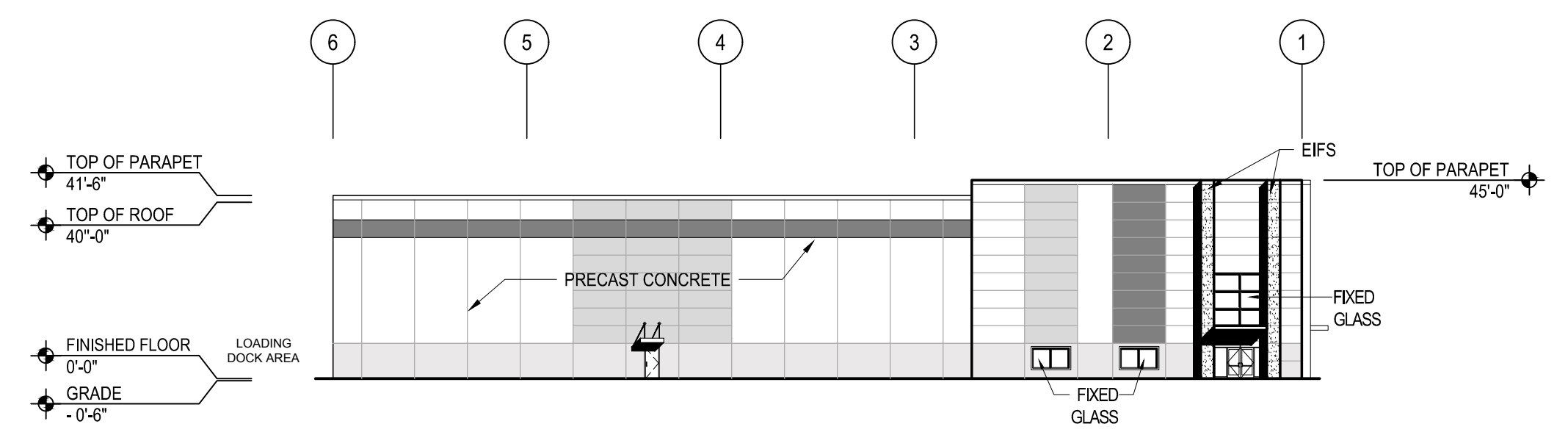


Jarmel Kizel
ARCHITECTS AND ENGINEERS INC.

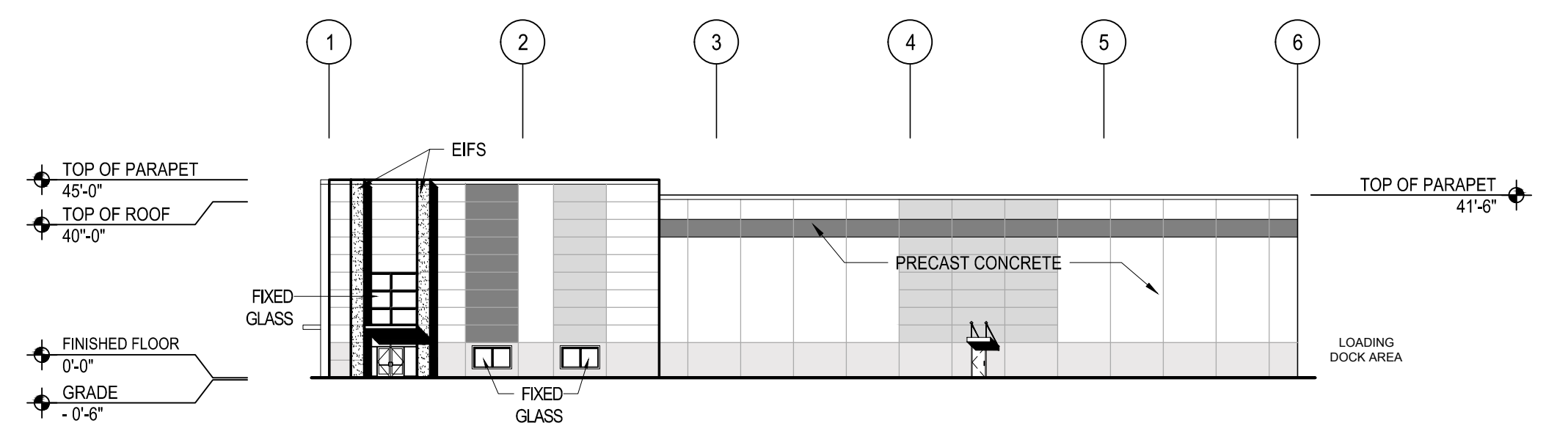
42 OKNER PARKWAY
LIVINGSTON, NEW JERSEY 07039
TEL: 973-994-9669
FAX: 973-994-4069

www.jarmelkizel.com
Architecture
Engineering
Interior Design
Implementation Services

NJ State Board Of Architects Authorization No. 1611
NJ State Board Of Engineers & Land Surveyors Authorization No. GA-278177

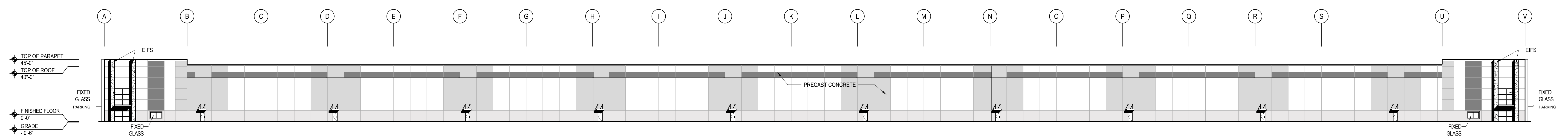


1 LEFT ELEVATION
SCALE: 1/32"=1'-0"

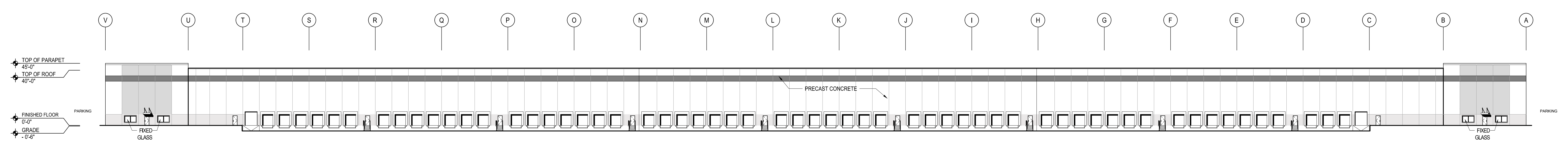


2 RIGHT ELEVATION
SCALE: 1/32"=1'-0"

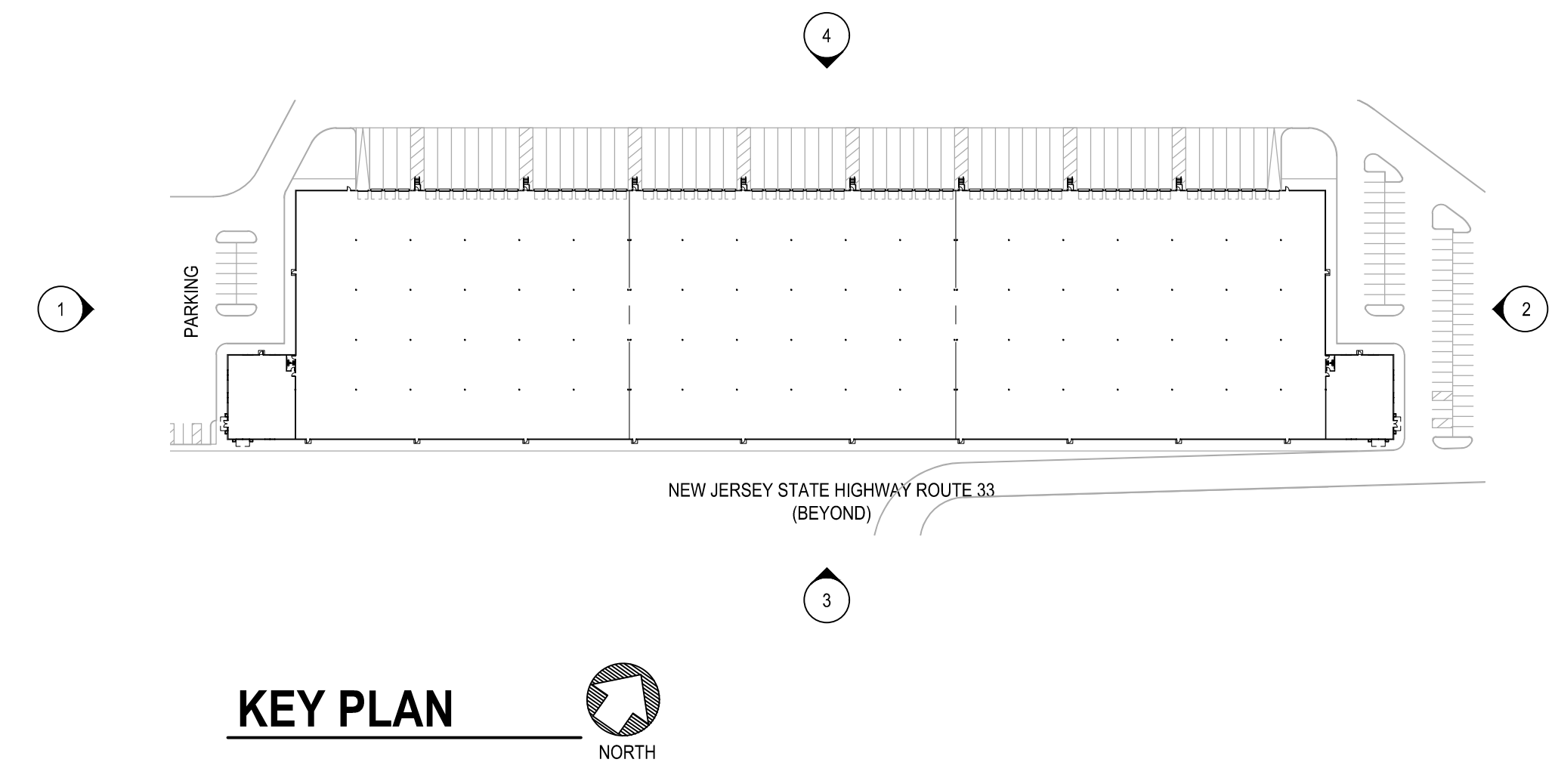
LEGEND:
■ DARK GREY
■ MEDIUM BROWN
■ BEIGE



3 FRONT ELEVATION
SCALE: 1/32"=1'-0"



4 REAR ELEVATION
SCALE: 1/32"=1'-0"



KEY PLAN
NORTH

ISSUE			
NO.	DATE	DESCRIPTION	INT.
1	11-01-21	ZONING BOARD SUBMISSION	IHK

REVISION			
NO.	DATE	DESCRIPTION	INT.

PRINCIPALS
MATTHEW B. JARMEI, AIA, MBA
RICHARD A. JARMEI, PE
IRWIN H. KIZEL, AIA, PP

ARCHITECTS & ENGINEERS
JASMINE ALCADE, AIA
RONALD A. BRONKHORST, PE
JEROME LESLIE EBEN, P.A.A., P.P.
GERARD P. GEBARDO, PE
FREDERICK KINCAID, AIA
DAVID J. LEISBERG, P.A.
KAROLINA PODKONCZAK, AIA
ROBERT B. ROBINSON, AIA
CHERYL SCHWEIKER, AIA

Project: PROPOSED WAREHOUSE FOR
624 EAST WINDSOR HI-TECH ASSOCIATES, LLC
624 MERCER STREET (NJSH ROUTE 33)
TOWNSHIP OF EAST WINDSOR
MERCER COUNTY, NEW JERSEY

Project Number: MERCERST20-179
Scale: AS NOTED
Drawn By: AA
Approved By: IHK

Drawing Name: ELEVATIONS
Drawing Number: A-2
Initial Date: 09-02-20

ARCHITECT OF RECORD
IRWIN H. KIZEL, AIA, PP
NJ LIC. 21-00079190

H:\DRAWINGS\BAPP\PORT PROPERTIES\BAPP\PORTZ01.179 - 624 MERCER STREET WAREHOUSE\MERCERST20-179 SA-2 ELEVATIONS.DWG - AAMAVA PLOTTED: 11/1/2021 4:07 PM