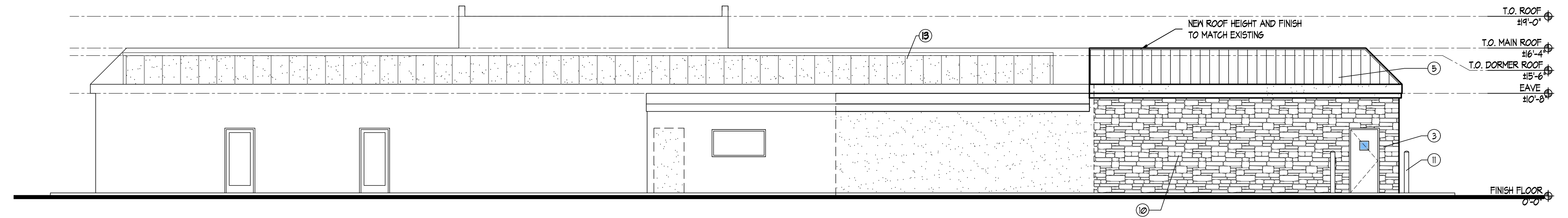
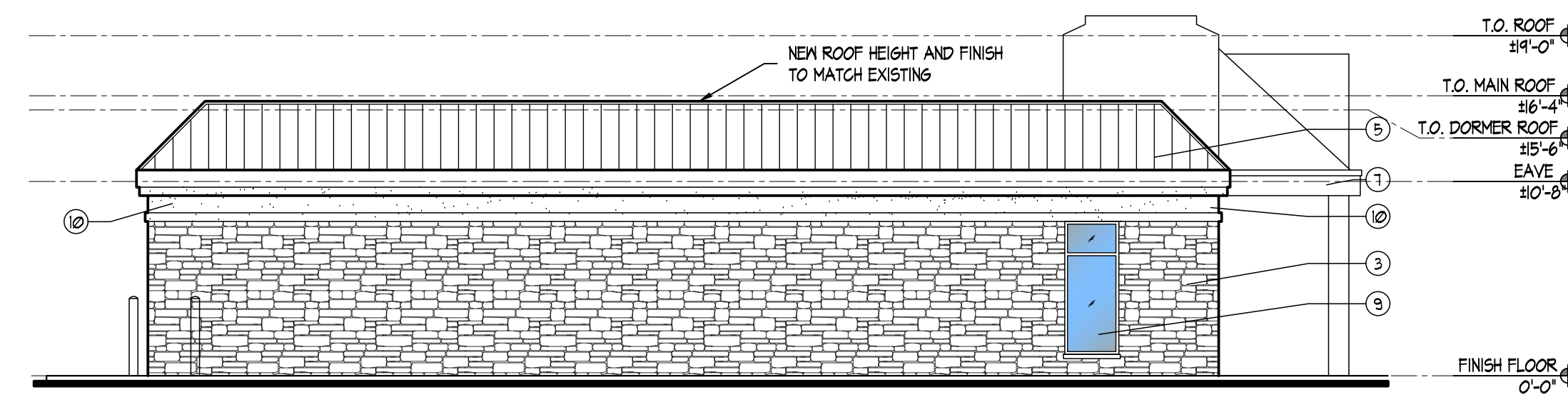


**EXTERIOR FINISHES SCHEDULE**

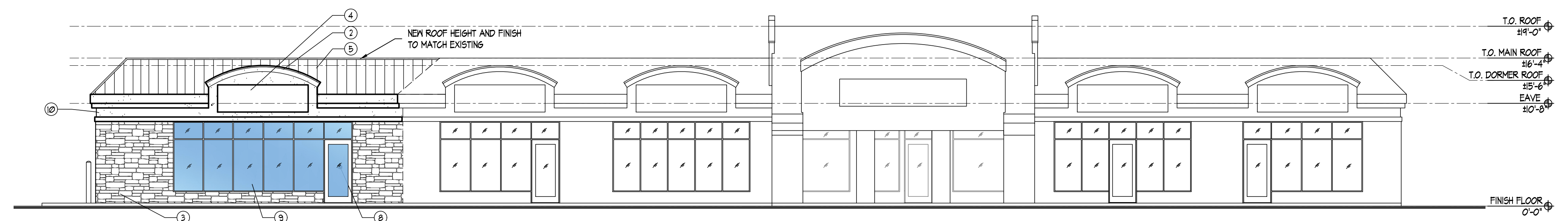
- ① GOOSE NECK LED SIGN LIGHTS  
COLOR: TO MATCH EXISTING
- ② EIFS STUCCO BAND W/ ALUMINUM CAP  
COLOR: BIEGE - TO MATCH EXISTING
- ③ STONE VENEER  
COLOR: TO MATCH EXISTING
- ④ SIGN AREA  
COLOR: TO MATCH EXISTING
- ⑤ STANDING SEAM METAL ROOFING  
COLOR: TO MATCH EXISTING
- ⑥ GALVANIZED STEEL RODS AND PLATES  
COLOR: BLACK
- ⑦ ALUMINUM PANEL  
COLOR: BLACK
- ⑧ ALUMINUM STORE FRONT DOORS  
COLOR: TO MATCH EXISTING
- ⑨ ALUMINUM STORE FRONT WINDOW  
COLOR: TO MATCH EXISTING
- ⑩ EIFS STUCCO FINISH  
COLOR: TO MATCH EXISTING
- ⑪ STEEL BOLLARD  
COLOR: BLACK
- ⑫ LOGO SIGN AREA  
COLOR: T.B.D.
- ⑬ ALUMINUM HVAC SCREENING  
COLOR: STUCCO FINISH TO MATCH



③ PROPOSED REAR ELEVATION (SOUTHEAST)  
SCALE: 1/8" = 1'-0"



② PROPOSED NORTHEAST ELEVATION  
SCALE: 1/8" = 1'-0"



① PROPOSED FRONT ELEVATION (NORTHWEST)  
SCALE: 1/8" = 1'-0"

KSD PROJECT # : 23010

1	ISSUED FOR PLANING BOARD REVIEW	09/01/2023
NO.	DESCRIPTION	DATE

**ksd**  
architects  
KSD Architects LLC.  
New Jersey 13115  
New York 024015-1  
Maryland 14605

Laboratory Planning  
Pharmaceutical  
Hospitality  
Commercial  
Corporate  
Space Planning

1 Liberty Way  
Cranbury, New Jersey 08512  
609 655 9908 Tel  
609 655 9909 Fax  
www.ksdarchitects.com  
info@ksdarchitects.com

**PROPOSED BUILDING C - MEDICAL OFFICE BUILDING**

359, 369, 375 US Route 130, East Windsor, N J.

**SCH-2.1**

**Sep. 01, 2023**