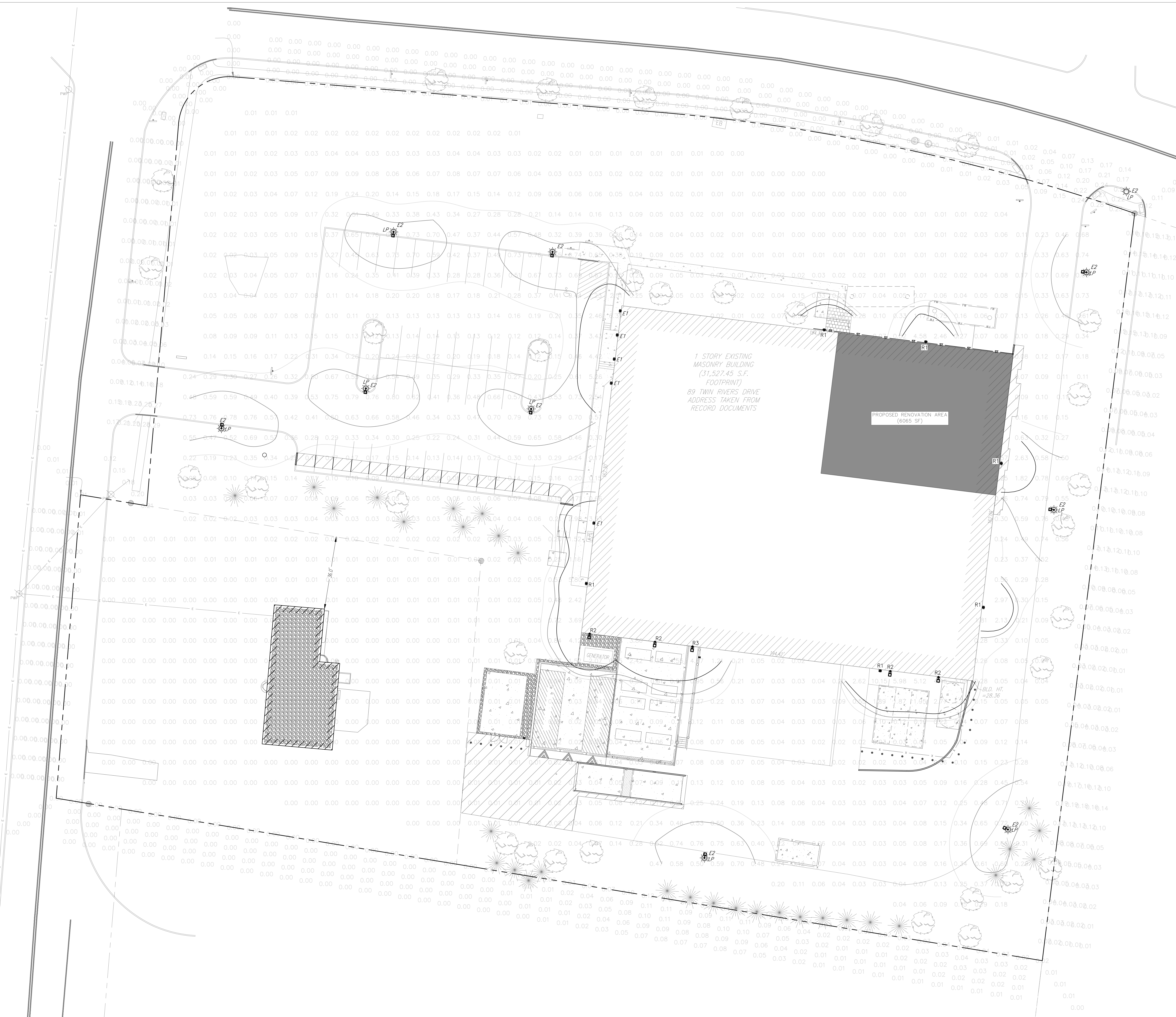


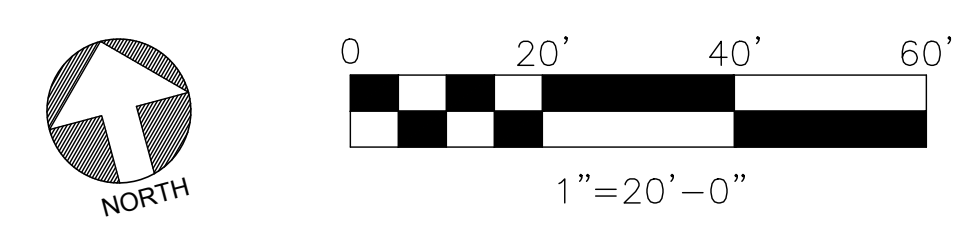
LINE STYLE	DESCRIPTION
—	FOOT-CANDLE CONTOUR 1.0
- - -	FOOT-CANDLE CONTOUR 0.5
...	FOOT-CANDLE CONTOUR 0.25
...	FOOT-CANDLE LEVELS



1 STORY EXISTING  
MASONRY BUILDING  
(31,527.45 S.F.  
FOOTPRINT)  
89 TWIN RIVERS DRIVE  
ADDRESS TAKEN FROM  
RECORD DOCUMENTS

PROPOSED RENOVATION AREA  
(6065 S.F.)

**A CIVIL LIGHTING PLAN**  
SCALE: 1" = 20'-0"



**GENERAL PHOTOMETRIC SCHEDULE**

AVERAGE FOOT-CANDLES	0.28
MAXIMUM FOOT-CANDLES	10.15
MINIMUM FOOT-CANDLES	0.00
MINIMUM TO MAXIMUM FC RATIO	0.00
MAXIMUM TO MINIMUM FC RATIO	10.15 / 0.00
AVERAGE TO MINIMUM FC RATIO	0.28 / 0.00

**LUMINAIRE SCHEDULE**

CALLOUT	SYMBOL	DESCRIPTION	BALLAST	MOUNTING	MOUNTING HEIGHT	MODEL	VOLTS	QUANTITY
E1	☐	WDC1 LED WITH P1 - PERFORMANCE PACKAGE, 2700K, BOCR1, VISUAL COMFORT WIDE OPTIC	ELECTRONIC	WALL	9'-0"	Lithonia Lighting, WDC1 LED P1 27K BOCR1 VW	120V 1P 2W	5
E2	○	Form Ten Square Area Comfort EHT4L, 196 LED's, 4000K CCT, TYPE 2 OPTIC, Comfort Light Engine, BOCR	ELECTRONIC	POLE	20'-0"	GARDCO, EHT4L-196L-450-NW-G3-2-UNV	120V 1P 2W	7
R1	☐	WDC1 LED WITH P1 - PERFORMANCE PACKAGE, 2700K, BOCR1, VISUAL COMFORT WIDE OPTIC	ELECTRONIC	WALL	9'-0"	Lithonia Lighting, WDC1 LED P1 27K BOCR1 VW	120V 1P 2W	6
R2	○	DSXF1 LED P1 40K FL	ELECTRONIC	WALL	9'-0"	Lithonia Lighting, DSXF1 LED P1 40K FL	120V 1P 2W	4
R3	○	CPMV3L/UNV1 S903D with Type 1 Optics, Diffused Polycarbonate Window.	ELECTRONIC	WALL	9'-0"	COOPER CROUSE-HINDS, CPMV3L-UNV1-S903D	120V 1P 2W	1



**Mainstay**  
ENGINEERING GROUP, INC.  
CIVIL & STRUCTURAL ENGINEERS  
1750 WALTON ROAD, BLUE BELL, PA 19422  
215.646.5595 www.mnegr.com  
PROJECT NO.: 062.21269

THESE DRAWINGS SHALL NOT BE UTILIZED FOR CONSTRUCTION UNLESS EXPLICITLY NOTED AS "ISSUED FOR CONSTRUCTION". THE INTENDED USE OF THESE DRAWINGS SHALL BE ONLY AS INDICATED IN THE ISSUANCE DESCRIPTION OF THE DRAWING TITLE BLOCK. MAINSTAY ENGINEERING GROUP, INC. SHALL ASSUME NO LIABILITY FOR DRAWINGS THAT ARE USED FOR ANY PURPOSE OTHER THAN INDICATED ON THESE DRAWINGS.

CLIENT  
**Hovione**  
89 TWIN RIVERS DRIVE, EAST WINDSOR TOWNSHIP, NEW JERSEY 08520

CONSULTING ARCHITECT/ENGINEER  
**CRB**  
CLARK, RICHARDSON AND BISKUP CONSULTING ENGINEERS, INC.  
CRB ARCHITECTS-ENGINEERS P.C.  
220 WEST GERMANTOWN PIKE SUITE 170  
PLYMOUTH MEETING, PA 19462  
PHONE: 610-278-7544  
FAX: 610-278-9194

PROJECT TITLE  
**89 TWIN RIVERS RENOVATION**  
BLOCK 20.06 LOTS 5 & 6 | I-O DISTRICT

REV	BY	DATE	DESCRIPTION
0	JTR	01MAY22	ISSUED FOR CONSTRUCTION
1	JTR	11SEP22	PRELIMINARY LAND DEVELOPMENT ISSUE
2	JTR	09NOV22	REVISED PRELIMINARY LAND DEVELOPMENT ISSUE
3	JTR	01MAY23	LAND DEVELOPMENT EXHIBIT

LICENSEE  
JUSTIN T. RUBY, P.E.  
STATE OF NEW JERSEY  
PROFESSIONAL ENGINEER  
LICENSE NO. 49538  
DATE: 01-MAY-2023

PROJ. NO. 217222 DESIGNED BY: JEO  
SCALE: 1" = 20' CHECKED BY: MEH/PJA  
SHEET SIZE: 30x42 APPROVED BY: JTR

DRAWING TITLE  
**CIVIL LIGHTING PLAN**

DRAWING NUMBER  
**C13-13**